



TPH6700

IP67 PC/ABS Housing
For R2000/R2000 Ent/R3000/R3000 Lite/ R3000 LG



INTRODUCTION

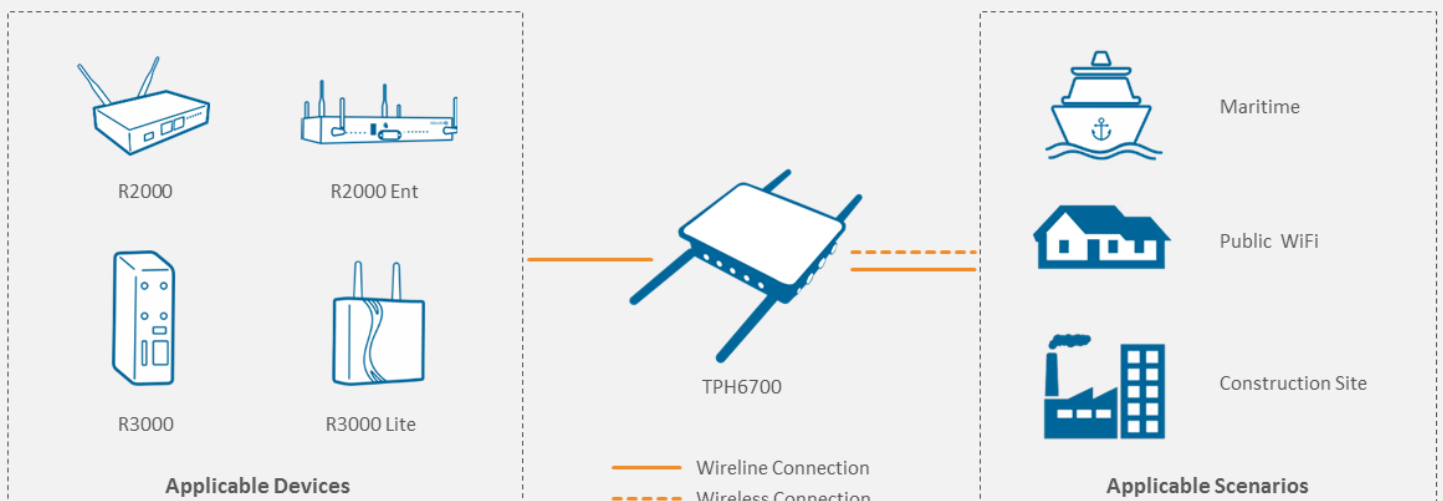
Designed to protect devices and connectors from extreme outdoor environments and harsh industrial conditions, the Robustel Typhoon6700 IP67 PC/ABS Housing (TPH6700) provides a weatherproof enclosure based on the available features of R2000/R2000 Ent/R3000/R3000 Lite/ R3000 LG. It combines a powerful device and a robust enclosure together in a single unit, providing high-protection for the use of the whole equipment. With an IP67 rated enclosure, the TPH6700 can be mounted either on a wall or a pole and positioned in diverse temperatures and environments.

Robustel is a leading global industrial IoT/M2M hardware and solution provider. Since its establishment in 2010 in Guangzhou, China, Robustel has been focusing on designing and manufacturing industrial cellular routers, gateways, modems, cloud platforms and E2E solutions. In order to support global business in more than 100+ countries and regions, Robustel has set up local offices in Germany, Australia, the Netherlands, the UK, Japan and Hong Kong.

KEY FEATURES

- > IP67 ingress protection withstanding water, dust and other extreme weather conditions
- > Standards for the housing-
Performance requirement for high and low temperature
Aging-resistance level (UL746C)
Flame-retardant level (grade 2 of UL746C)
Standard requirement for environment protection
- > Up to 24 hours rechargeable battery for endurance (R2000/R3000 Lite)
- > Including built-in DC input
- > Supports external solar energy (new energy) input
- > Applicable to the majority of Robustel’s products
- > Various interfaces meeting the different scenarios
- > Easy wall or pole mounting options

APPLICATION EXAMPLE



SPECIFICATIONS

Cellular Interface

Number of antennas 4 or 2 connectors optional
Connector M16, female

Wi-Fi Interface

Number of antennas 2 (WiFi MAIN + WiFi AUX)
Connector M16, female

Ethernet Interface

Number of ports 5, 2 or 1 ports optional
Connector M12

Serial Port

Number of ports 1 x RS-232, 1 x RS-485 or 1 x RS-232 + 1 x
Connector M12, 8 PIN

Power Supply

Number of ports 1 x POWER + 1 x POWER OPTIONAL
Connector M12, 3 pin or 5 pin optional
Input voltage POWER port -

Physical Characteristics

Enclosure cover Fully detachable
Material & Weight PC/ABS, 1010 g
Dimensions 310 x 245 x 93.4 mm
Installations Wall mounting and pole mounting

Approvals

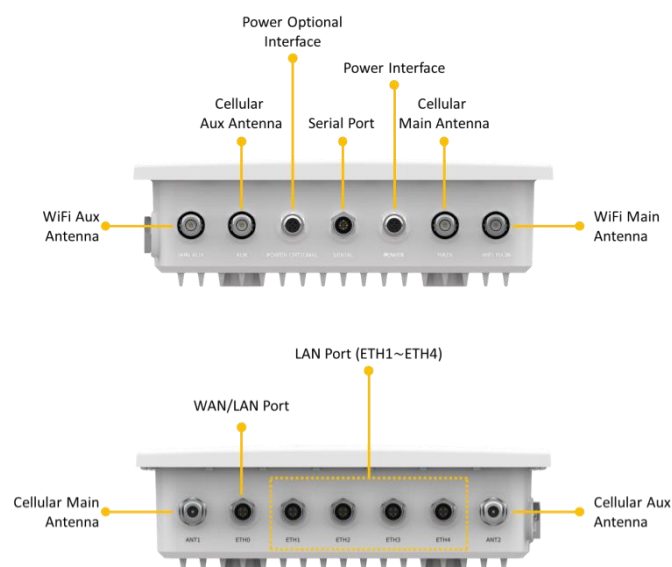
Regulatory CE, RCM
Application IP67 test
Environmental RoHS, WEEE

PACKAGE CONTENTS

- 1 x Robustel TPH6700 IP67 PC/ABS Housing

OPTIONAL ACCESSORIES (sold separately)

- AC power supply board (not apply to R2000 Ent)
- 3G/4G antenna
- Wi-Fi antenna
- GPS antenna
- Ethernet cable (4/8 pin)
- Power supply cable (3/5 pin)
- Serial port cable (8 pin)
- Wall mounting kit
- Pole mounting kit



ORDERING INFORMATION

Model	Number of Cellular Antennas	Number of Wi-Fi Antennas	Number of Ethernet Ports	Number of Serial Ports	Number of Lora Antennas	Operating Environment
TPH6700-R2000	2	2	2	-	-	Temp: -25 to 70°C RH: 5 to 95%
TPH6700-R2000E	2	2	5	-	-	Temp: -25 to 70°C RH: 5 to 95%
TPH6700-R2000D	2/4	2	4/5	-	-	Temp: -25 to 70°C RH: 5 to 95%
TPH6700-R2110	2	2	4	1	-	Temp: -25 to 70°C RH: 5 to 95%
TPH6700-R3000	2	1	2	1	-	Temp: -40 to 70°C RH: 5 to 95%
TPH6700-R3000L	2	-	1	1	-	Temp: -40 to 70°C RH: 5 to 95%
TPH6700-R3000LG	2	-	2	1	1	Temp: -40 to 70°C RH: 5 to 95%
TPH6700-R3000Q	2	-	4	1	-	Temp: -40 to 85°C RH: 5 to 95%

*For more ordering information about TPH6700, please contact your Robustel sales representative.