



App User Guide

WLAN multi_AP

Version: 1.0.1

Date: 2018-06-29

Status: Confidential

Contents

Revision History	3
Chapter 1 Overview	4
Chapter 2 App Installation	4
2.1 Installation	4
2.2 Uninstallation	6
Chapter 3 Parameters Description	7

Revision History

Updates between document versions are cumulative. Therefore, the latest document version contains all updates made to previous versions.

Release Date	App Version	Doc Version	Details
2016-06-06	2.0.0	v.1.0.0	First Release
2018-06-29	2.0.0	v.1.0.1	Revised the company name

Chapter 1 Overview

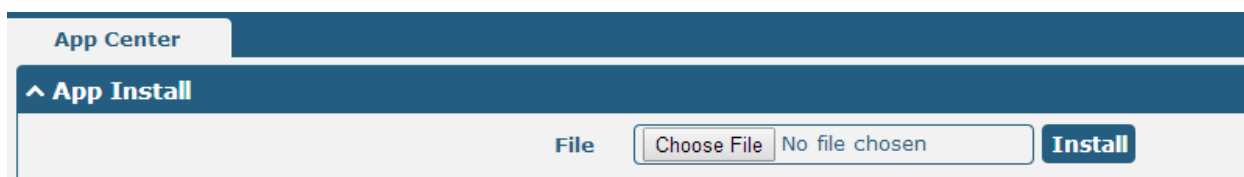
WLAN_multi_AP function is used to add more AP. router could connect to the available AP automatically which had preset in router. It is an App which needs to install into router in **System->App Center** unit.

Chapter 2 App Installation

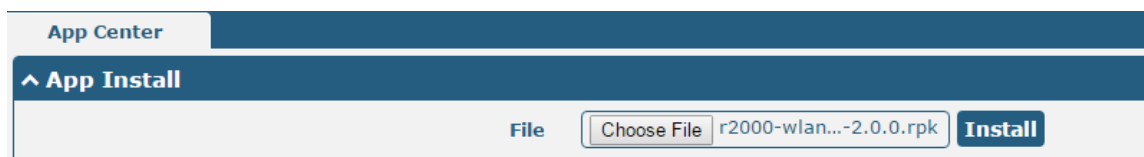
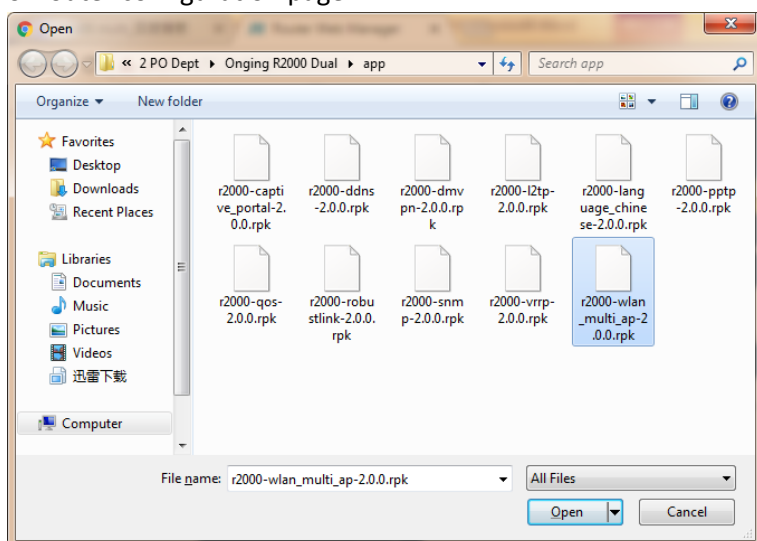
2.1 Installation

Path: **System->App**

- 1 Please place WLAN_multi_AP App .rpk file (e.g. r2000-wlan_multi_AP-2.0.0.rpk) into a free disk of PC. And then log in router configuration page; go to **System->App** as the following screenshot show.

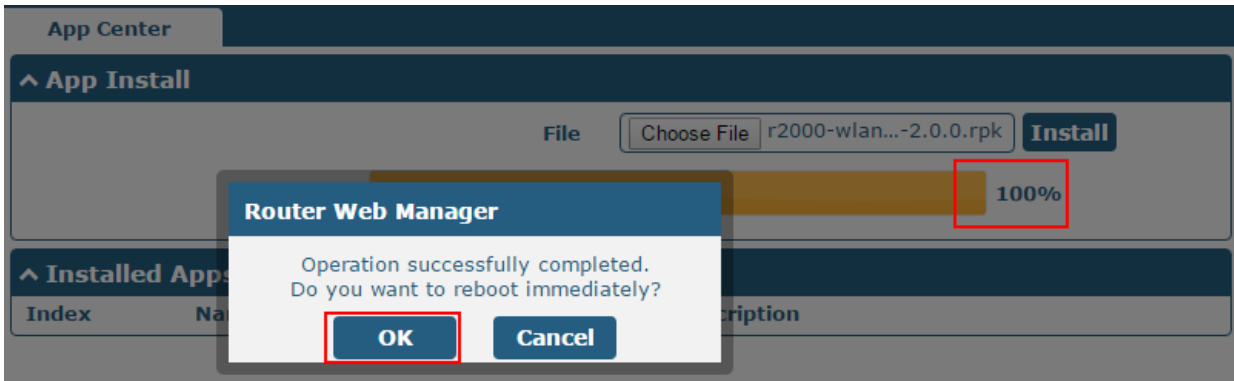


- 2 Click "Choose File" button, select WLAN_multi_AP App .rpk file from the PC, then click "Install" button of router configuration page.

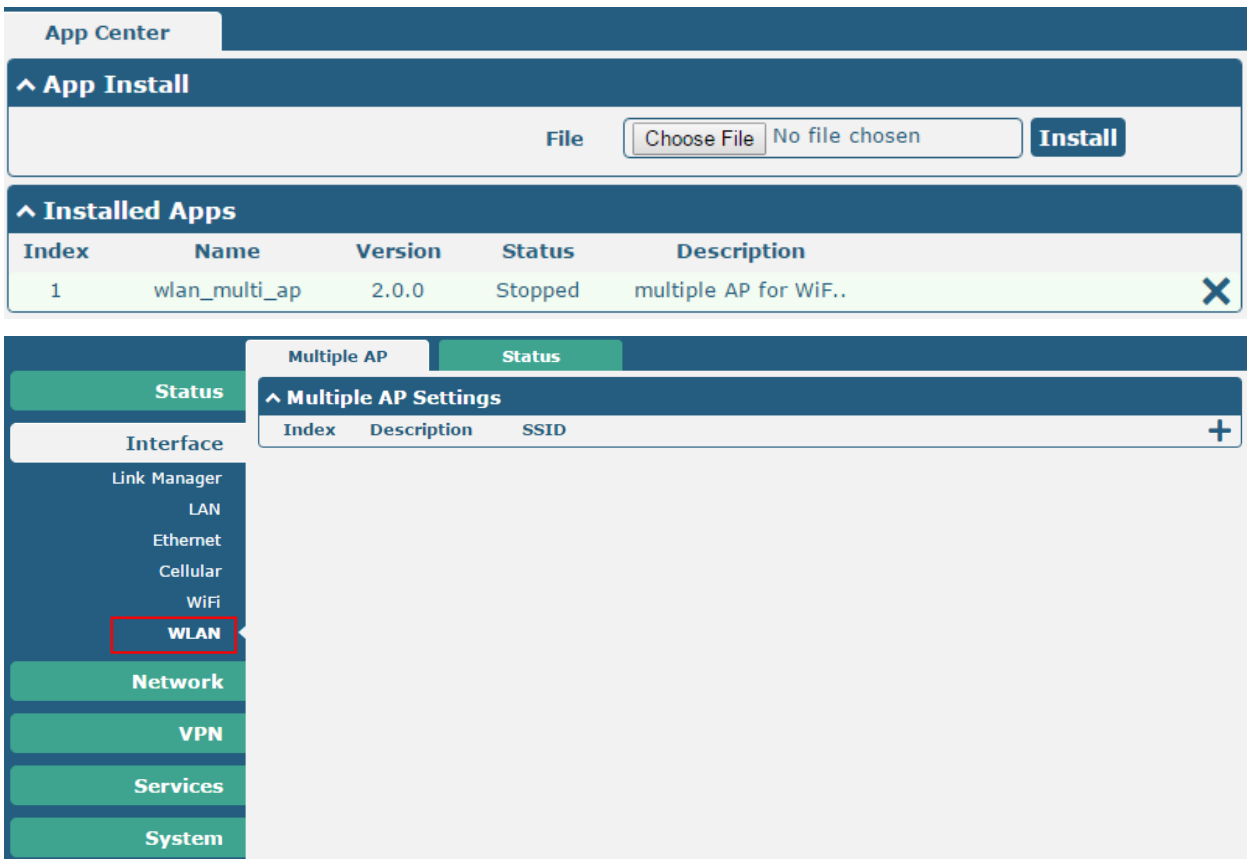


Robustel WLAN_multi_AP App User Guide

- When the rate of installation progress reach 100%, the system will pop up a reboot router reminder window. Please click “OK” to make router reboot.



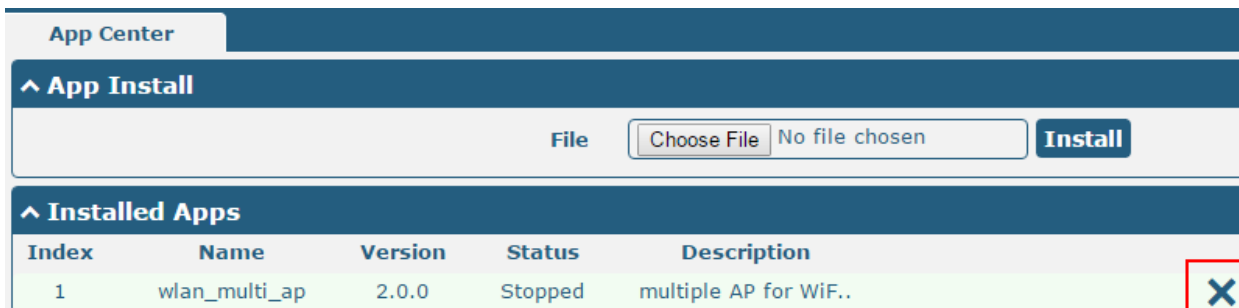
- After router power on again, log in configuration page, WLAN_multi_AP will be include in App Center’s “Installed Apps” list, and the function configuration will display in **Interface->WLAN** part.



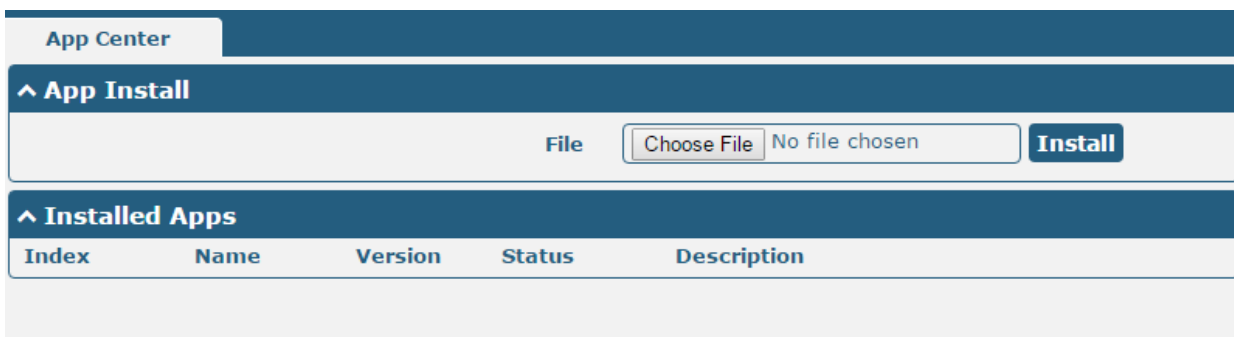
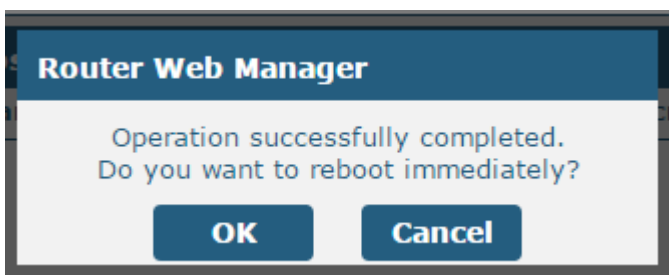
2.2 Uninstallation

Path: System->App Center

- 1 Go to “**Installed Apps**”, find WLAN_multi_AP App and then click “**X**”.



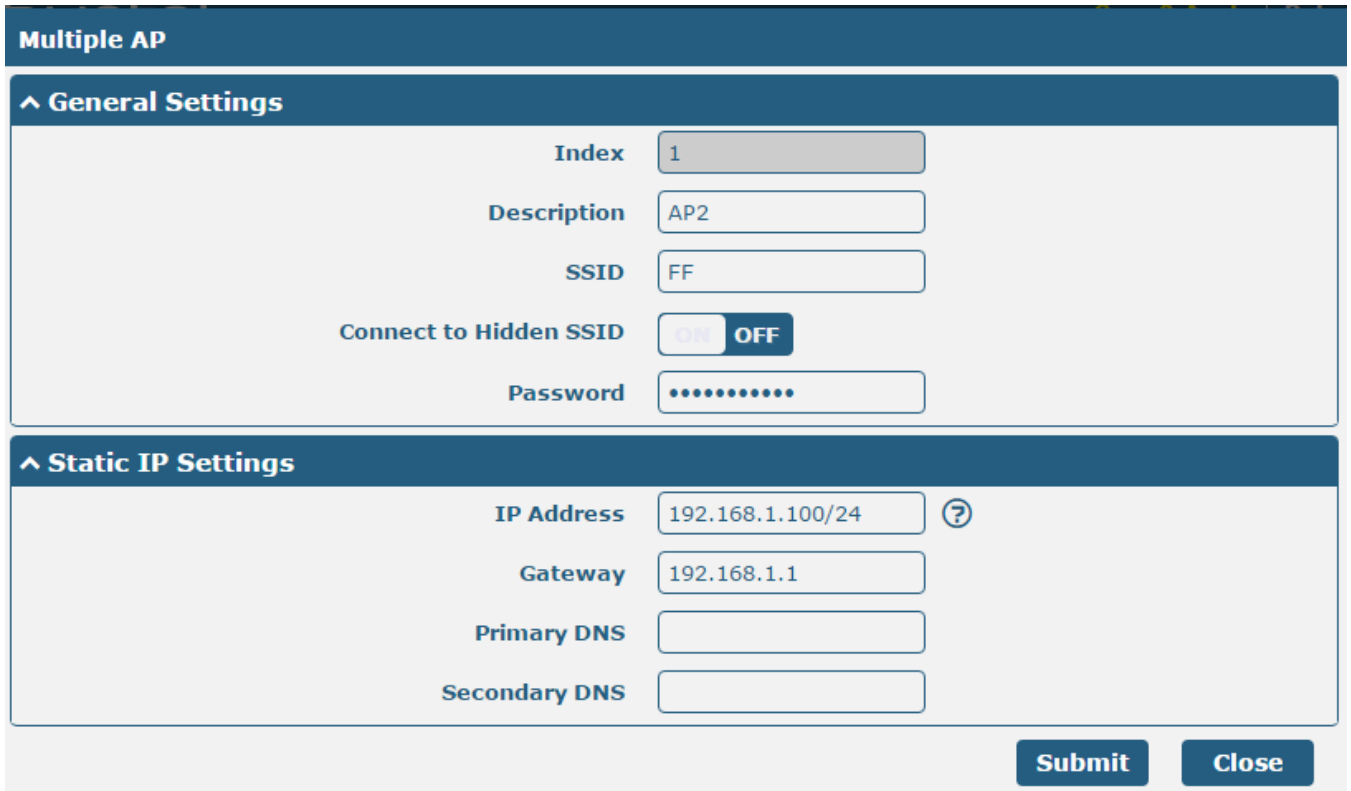
- 2 Click “OK” in the router reboot reminder popup window. When router finish restart, WLAN_multi_AP had been uninstalled.



Chapter 3 Parameters Description



Click the “+” symbol to add a new AP for router, it will pop up the window of multiple AP configuration. The Maximum number of Wi-Fi AP is 10.



WLAN Setting		
Item	Description	Default
SSID	Enter SSID of the access point which router want to connect. Input from 1 to 32 characters.	Null
Connect to Hidden SSID	When router works as Client mode and need to connect to any access point which has hidden SSID, you need to enable this feature.	OFF
Password	Set the password for Wi-Fi connection authentication.	Null
IP Address	Enter the static IP address. IP address with netmask, e.g. 192.168.1.1/24	Null
Gateway	Enter the WiFi AP’s IP address.	Null
Primary DNS	Enter the primary DNS server IP address.	Null
Secondary DNS	Enter the Secondary DNS server IP address.	Null