



App User Guide

SNMP

Version: 1.0.1

Date: 2018-06-29

Status: Confidential

Contents

Revision History	3
Chapter 1 Overview	4
Chapter 2 App Installation	4
2.1 Installation	4
2.2 Uninstallation	6
Chapter 3 Parameters Description	7

Revision History

Updates between document versions are cumulative. Therefore, the latest document version contains all updates made to previous versions.

Release Date	App Version	Doc Version	Details
2016-06-06	2.0.0	v.1.0.0	First Release
2018-06-29	2.0.0	v.1.0.1	Revised the company name

Chapter 1 Overview

SNMP (Simple Network Management Protocol) is a widely used protocol for monitoring the health and welfare of network equipment (e.g. routers). SNMP monitor devices can be computer, router, printer, ups or any other SNMP device.

SNMP in router implement SNMP v1, SNMP v2c and SNMP v3. We can download the MIB file directly from web interface. MIBs are Management Information Base's that describe the data structures that can be requested from SNMP device. We also can manage router router via SNMP tool with the MIB file.

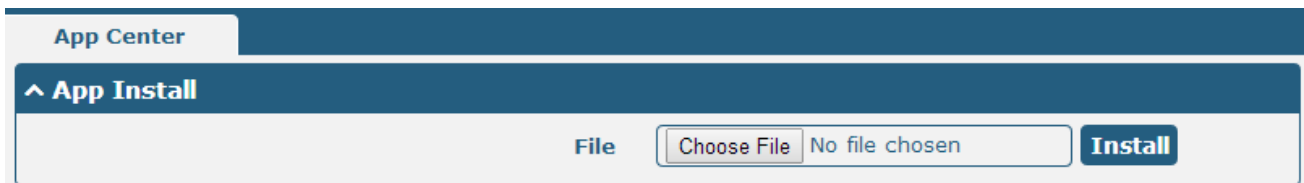
SNMP function is an App which needs to install into router in **System->App Center** unit.

Chapter 2 App Installation

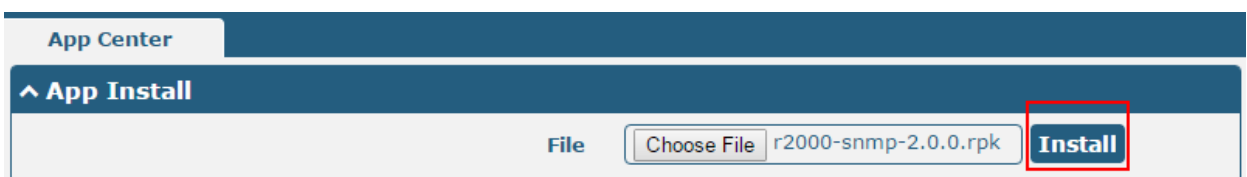
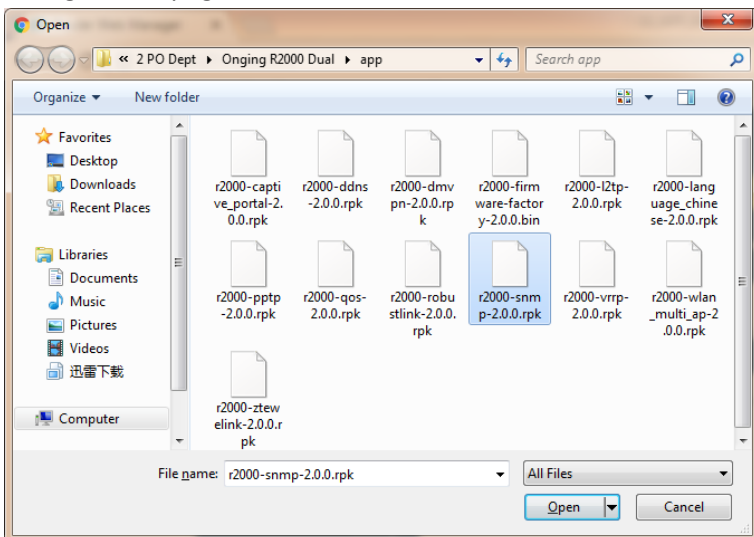
2.1 Installation

Path: **System->App Center**

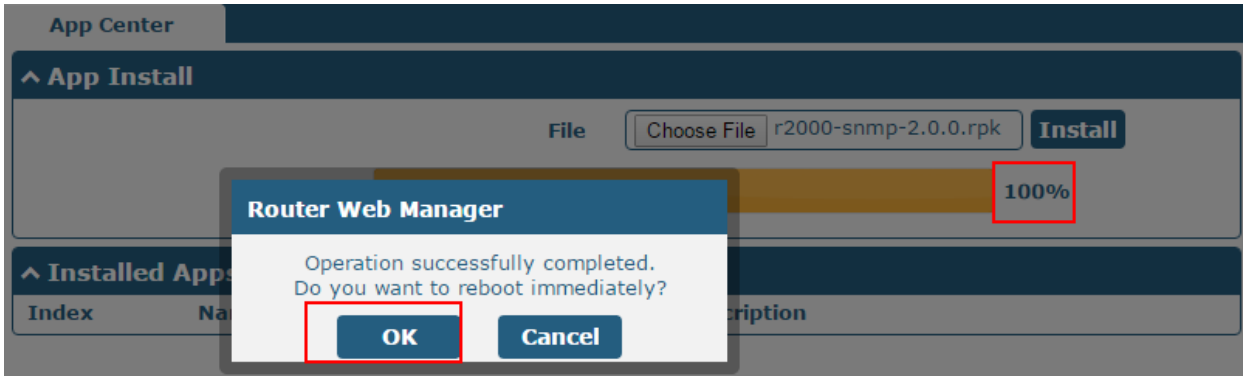
- 1 Please place SNMP App .rpk file (e.g. r2000-smnp-2.0.0.rpk) into a free disk of PC. And then log in router configuration page; go to **System->App** as the following screenshot show.
m



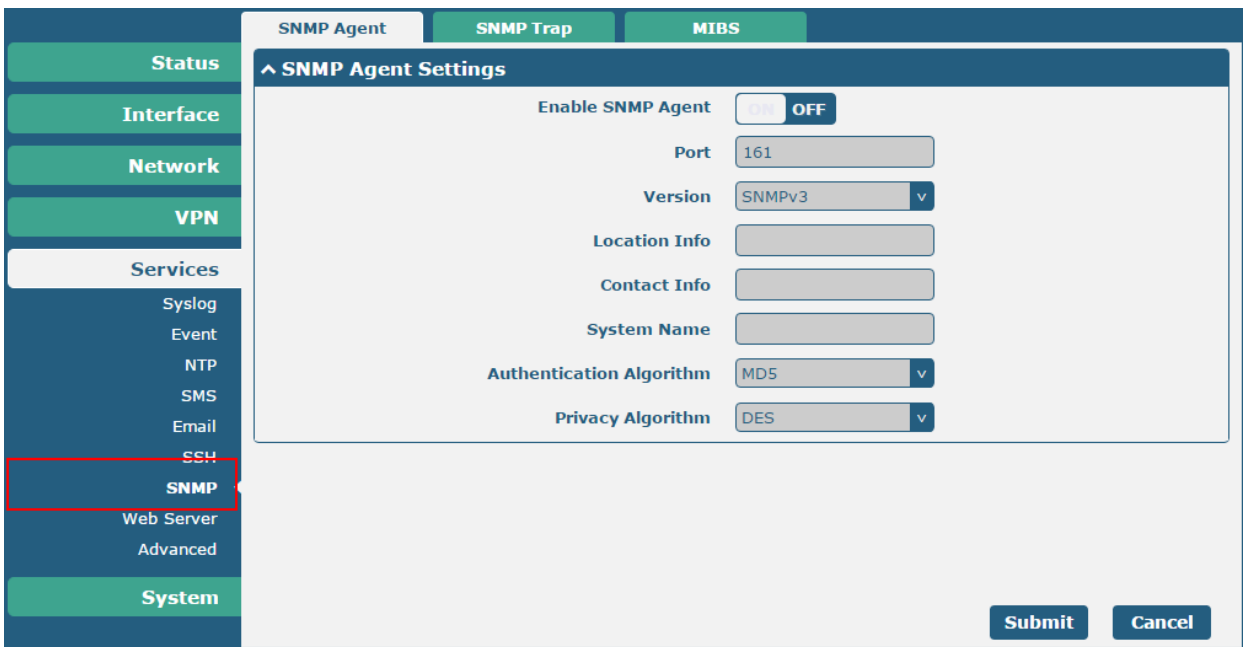
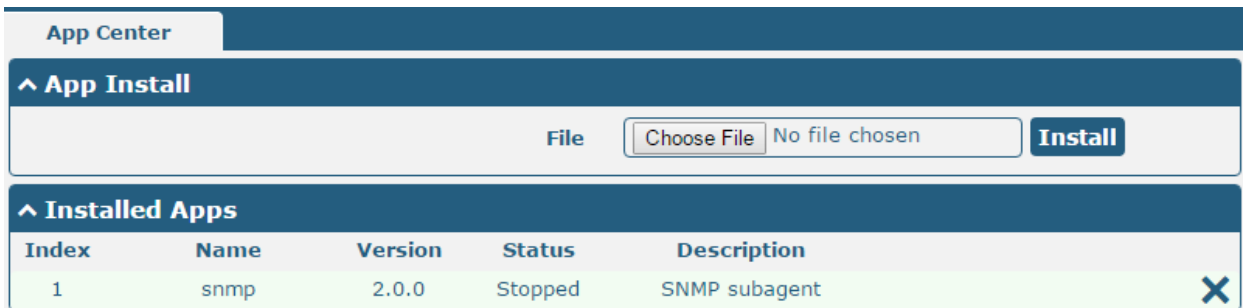
- 2 Click "Choose File" button, select SNMP App .rpk file from the PC, then click "Install" button of router configuration page.



- 3 When the rate of installation progress reach 100%, the system will pop up a reboot router reminder window. Please click “OK” to make router reboot.



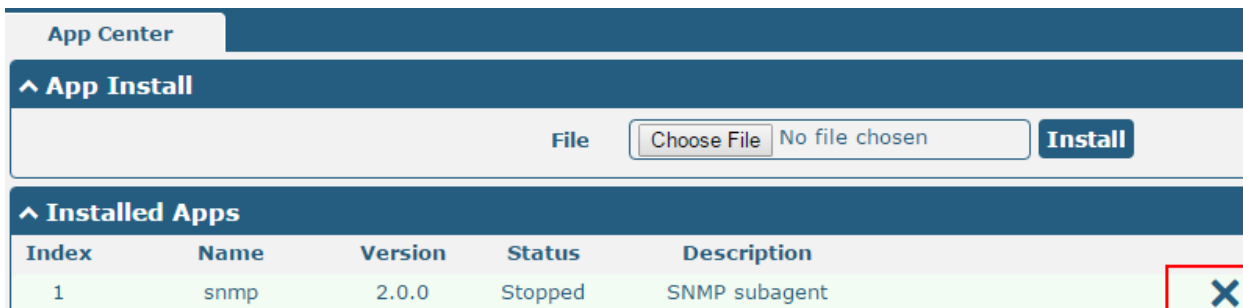
- 4 After router power on again, log in configuration page, SNMP will be include in App Center’s “Installed Apps” list, and the function configuration will display in **Services** part.



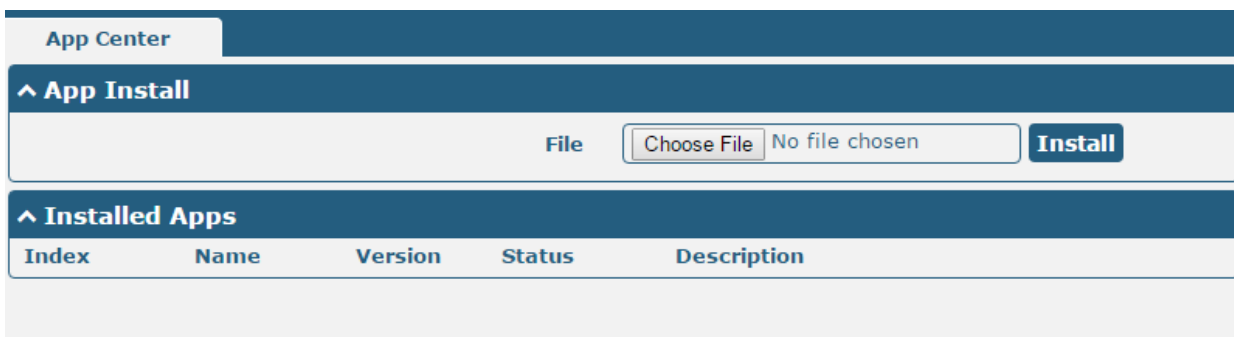
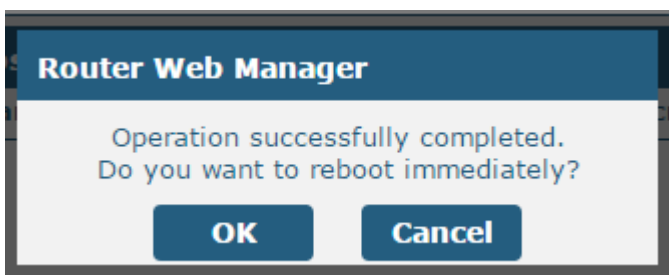
2.2 Uninstallation

Path: System->App Center

- 1 Go to “**Installed Apps**”, find SNMP App and then click “**X**”.



- 2 Click “OK” in the router reboot reminder popup window. When router finish restart, SNMP had been uninstalled.

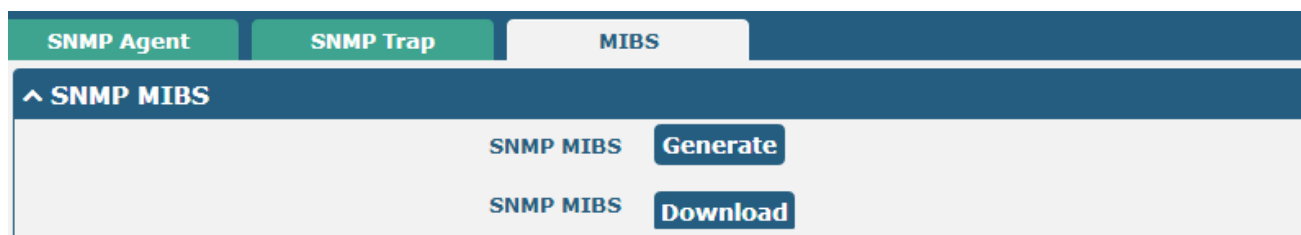


Chapter 3 Parameters Description

SNMP Agent @ SNMP		
Item	Description	Default
Enable SNMP Agent	Switch "ON" to enable SNMP Agent.	OFF
Port	UDP port for sending and receiving SNMP requests.	161
Version	Select from "SNMPv1", "SNMPv2" and "SNMPv3".	SNMPv3
Location Info	Enter the router's location info which will send to NMS (Network Management System).	null
Contact Info	Enter the router's contact info which will send to NMS	null
System name	Enter the router's system name which will send to NMS.	null
Readonly Community Name	Enter the community name which was allowed only to get the status of router.	null
Readwrite Community Name	Enter the community name which was allowed to get the status and set the configuration of router.	null
Authentication Algorithm	Select from "MD5" or "SHA". The authentication password default to be the login password of router. The Factory Default login password of router is "admin". We can change the password in System-> User Management section. The authentication password must be the same as privacy password on NMS.	MD5
Privacy Algorithm	Select from "DES" or "AES". The privacy password default to be the login password of router. The Factory Default login password of router is "admin". We can change the password in System-> User Management section. The privacy password must be the same as authentication password on NMS.	DES

SNMP Agent	SNMP Trap	MIBS
^ SNMP Trap Settings		
Enable SNMP Trap	<input checked="" type="checkbox"/> ON <input type="checkbox"/> OFF	
Version	SNMPv3 <input type="button" value="v"/>	
Receiver Address	<input type="text"/>	
Receiver Port	162 <input type="text"/>	
^ SNMPv3 Authentication		
Username	<input type="text"/>	
Authentication Algorithm	MD5 <input type="button" value="v"/>	
Authentication Password	<input type="text"/>	
Privacy Algorithm	DES <input type="button" value="v"/>	
Privacy Password	<input type="text"/>	
^ Event Selection <input style="float: right;" type="button" value="?"/>		
System Startup	<input type="checkbox"/> ON <input checked="" type="checkbox"/> OFF	
System Reboot	<input type="checkbox"/> ON <input checked="" type="checkbox"/> OFF	
System Time Update	<input type="checkbox"/> ON <input checked="" type="checkbox"/> OFF	
Configuration Change	<input type="checkbox"/> ON <input checked="" type="checkbox"/> OFF	
Cellular Network Type Change	<input type="checkbox"/> ON <input checked="" type="checkbox"/> OFF	
Cellular Data Stats Clear	<input type="checkbox"/> ON <input checked="" type="checkbox"/> OFF	
Poor Signal Quality	<input type="checkbox"/> ON <input checked="" type="checkbox"/> OFF	
Link Switching	<input type="checkbox"/> ON <input checked="" type="checkbox"/> OFF	

SNMP Trap		
Item	Description	Default
Enable SNMP Trap	Switch "ON" to enable SNMP Trap feature.	Disable
Version	Select from "SNMPv1", "SNMPv2" and "SNMPv3".	SNMPv2
Receiver Address	Enter NMS (Network Management System) IP address.	Null
Receiver Port	Enter NMS port number	0
SNMPv3 Authentication		
Username	Set the username for NMS to receive the SNMP trap.	null
Authentication Algorithm	Select from "MD5" or "SHA".	MD5
Authentication Password	Set the authentication password for NMS to receive the SNMP trap.	null
Privacy Algorithm	Select from "DES" or "AES".	DES
Privacy password	Set the privacy password for NMS to receive the SNMP trap.	null
Event Selection		
Switch "ON" to enable the event. When the enabled event occurs, router will sent the related SNMP trap to NMS.		



MIBS	
Item	Description
Generate	Click to generate the SNMP MIB file.
Download	Click to download the SNMP MIB file which is used to manage the router router via SNMP tool.