



# App User Guide

## Captive Portal

**Version: 1.0.0**

**Date: 2016-06-06**

**Status: Confidential**

Copyright© Guangzhou Robustel Technologies Co., Limited

All Rights Reserved.

## Contents

Revision History .....	3
<b>Chapter 1 Overview .....</b>	<b>4</b>
<b>Chapter 2 App Installation .....</b>	<b>4</b>
<b>2.1 Installation .....</b>	<b>4</b>
<b>2.2 Uninstallation .....</b>	<b>6</b>
<b>Chapter 3 Parameters Description .....</b>	<b>7</b>

## Revision History

Updates between document versions are cumulative. Therefore, the latest document version contains all updates made to previous versions.

Release Date	App Version	Doc Version	Details
2016-06-06	2.0.0	v.1.0.0	First Release

## Chapter 1 Overview

Captive Portal is a webpage authentication setting. A captive portal is a 'Landing' web page, presented by a Layer 3 brand Layer 2 Operator and shown to users before they gain more-broad access to URL or http-based Internet services. Often used to present a Landing or Log-In page, the portal intercepts observed packets until such time as the user is authorized to launch browser sessions. After being redirected to a web page which may require authentication, payment, acceptance of EULA/acceptable use policies or other valid credentials that the host and user agree to, the user is granted conditional Internet access.

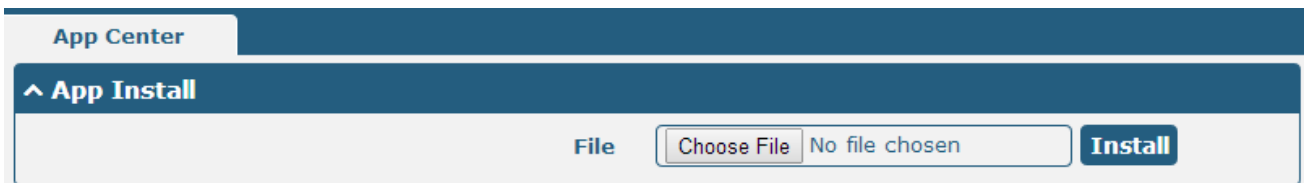
Captive Portal function in router used to authenticate the Wi-Fi access, it is an App which needs to install into router in **System->App Center** unit.

## Chapter 2 App Installation

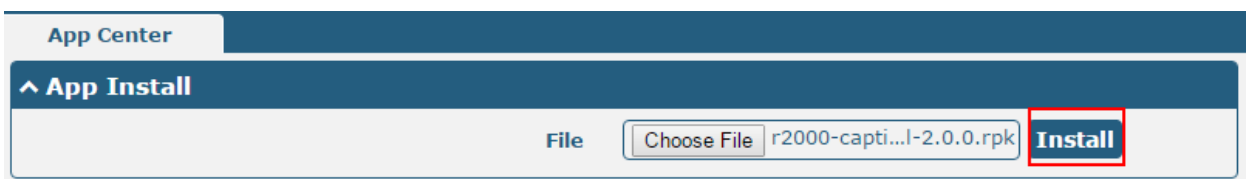
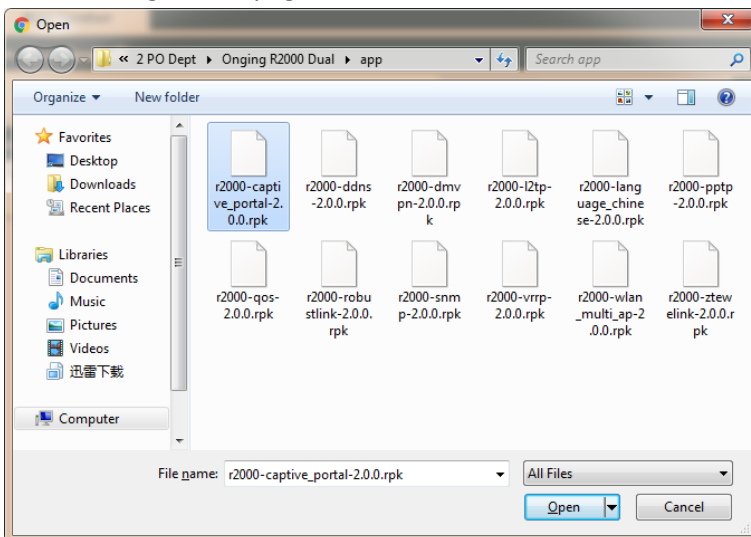
### 2.1 Installation

Path: **System->App**

- 1 Please place Captive Portal App .rpk file (e.g. r2000-captive portal-2.0.0.rpk) into a free disk of PC. And then log in router configuration page, go to **System->App** as the following screenshot show.

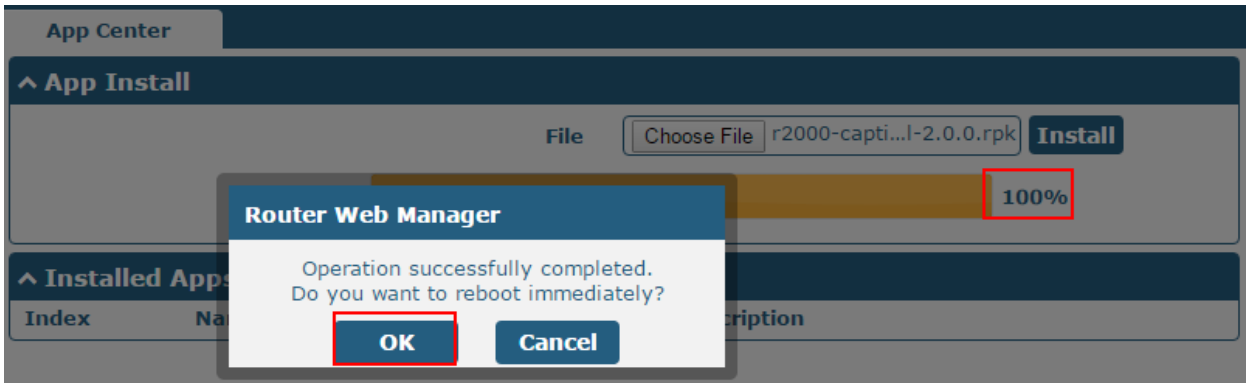


- 2 Click "Choose File" button, select Captive Portal App .rpk file from the PC, then click "Install" button of router configuration page.

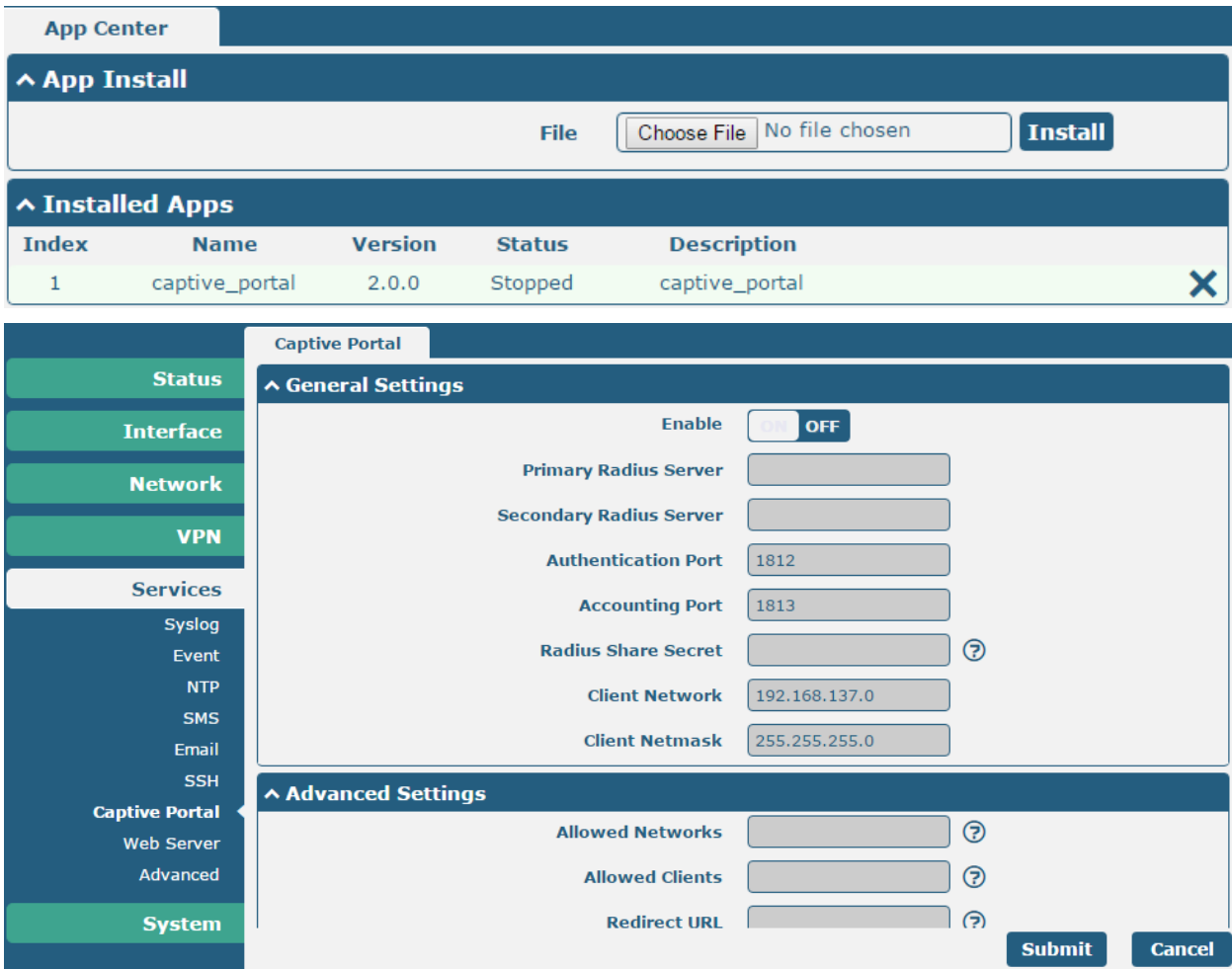


## Robustel Captive Portal App User Guide

- When the rate of installation progress reach 100%, the system will pop up a reboot router reminder window. Please click “OK” to make router reboot.



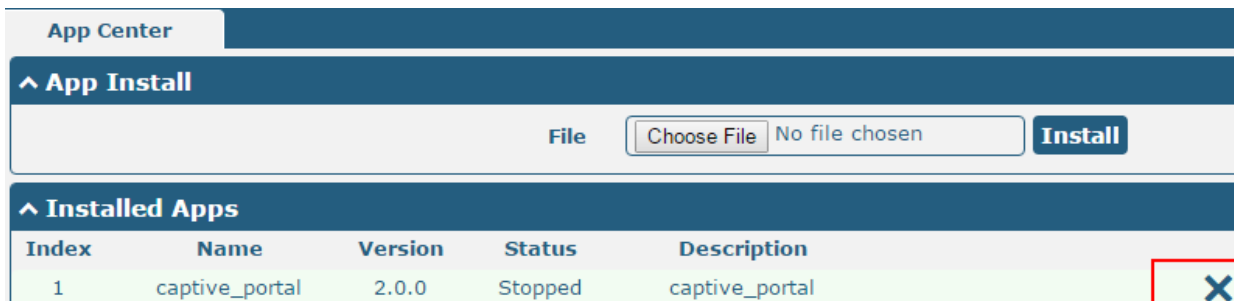
- After router power on again, log in configuration page, Captive Portal will be include in App Center’s “Installed Apps” list, and the function configuration will display in **Services** part.



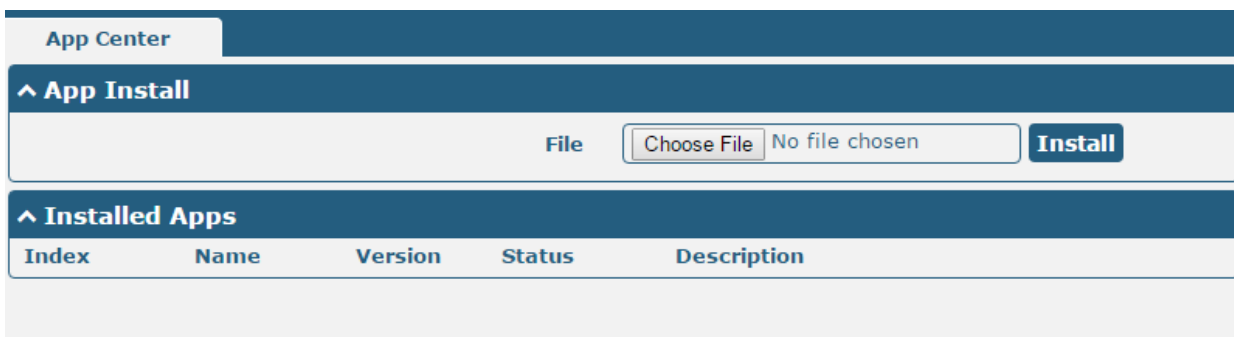
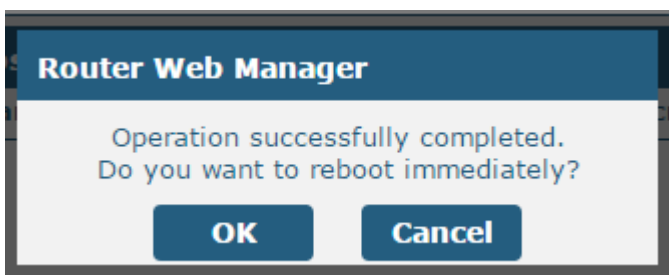
## 2.2 Uninstallation

Path: System->App Center

- 1 Go to “**Installed Apps**”, find Captive Portal App and then click “**X**”.



- 2 Click “OK” in the router reboot reminder pop up window. When router finish restart, Captive Portal had been uninstalled.



## Chapter 3 Parameters Description

Captive Portal

^ General Settings

Enable ON OFF

Primary Radius Server

Secondary Radius Server

Authentication Port

Accounting Port

Radius Share Secret  ?

Client Network

Client Netmask

^ Advanced Settings

Allowed Networks  ?

Allowed Clients  ?

Redirect URL  ?

Captive Portal		
Item	Description	Default
Enable	Click to enable Captive Portal function. Captive Portal mainly used for network access authentication. Note: This function only is available for Wi-Fi function of router. Before use the function in actual application, please remember to configure router as a Wi-Fi AP.	ON
Primary Radius Server	Enter Primary Radius Server's IP address. Radius Server is responsible for receiving and responding Wi-Fi access request from Wi-Fi client under router (Wi-Fi AP).	Null
Secondary Radius Server	Enter Secondary Radius Server's IP address.	Null
Authentication Port	Enter the Authentication Port which is used to authenticate users' access.	1812
Accounting Port	Enter the Accounting Port which is used to authenticate users' access.	1813
Radius Share Secret	Enter the Radius Share Secret which used to authenticate the connection between router and Radius Server.	Null
Client Network	Set the subnet for router used to assign to Wi-Fi client.	192.168.137.0
Client Netmask	Set the netmask of Client Network.	255.255.255.0
Allowed Networks	Enter any website of Wi-Fi client, comma separated. Specific user	Null

Captive Portal		
Item	Description	Default
	can access network without authentication.	
Allowed Clients	Enter user's MAC, comma separated. Specific Wi-Fi client can access network without authentication.	Null
Redirect URL	Enter URL, after log in landing page, the webpage switch to URL page automatically.	Null