



App User Guide

VRRP

Version: 1.0.0

Date: 2016-06-06

Status: Confidential

Contents

Revision History	3
Chapter 1 Overview	4
Chapter 2 App Installation	4
2.1 Installation	4
2.2 Uninstallation	6
Chapter 3 Parameters Description	7

Revision History

Updates between document versions are cumulative. Therefore, the latest document version contains all updates made to previous versions.

Release Date	App Version	Doc Version	Details
2016-06-06	2.0.0	v.1.0.0	First Release

Chapter 1 Overview

VRRP (Virtual Router Redundancy Protocol) is a fault-tolerant protocol. VRRP protocol can help to constitute a router backup group in a LAN, the VRRP router is equivalent to a virtual router. A host in LAN only need to know this virtual router's IP address and doesn't need to know the IP address of the specific router. When set the host's default gateway as the virtual router's virtual IP address, host can use the virtual gateway to communicate with the external network.

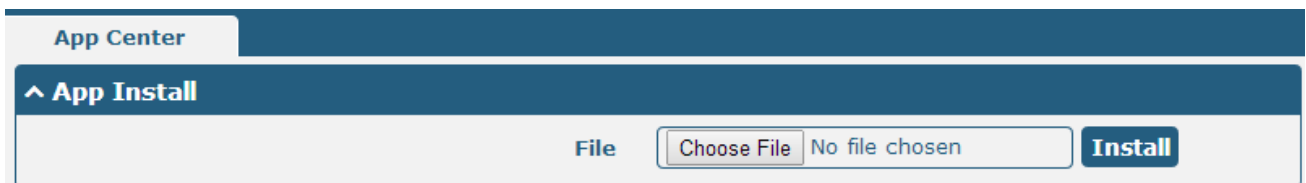
VRRP function is an App which needs to install into router in **System->App Center** unit.

Chapter 2 App Installation

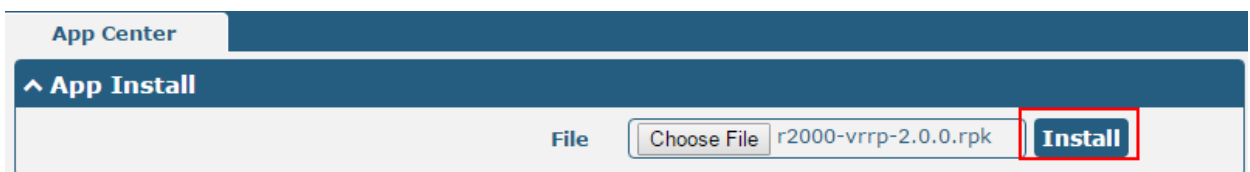
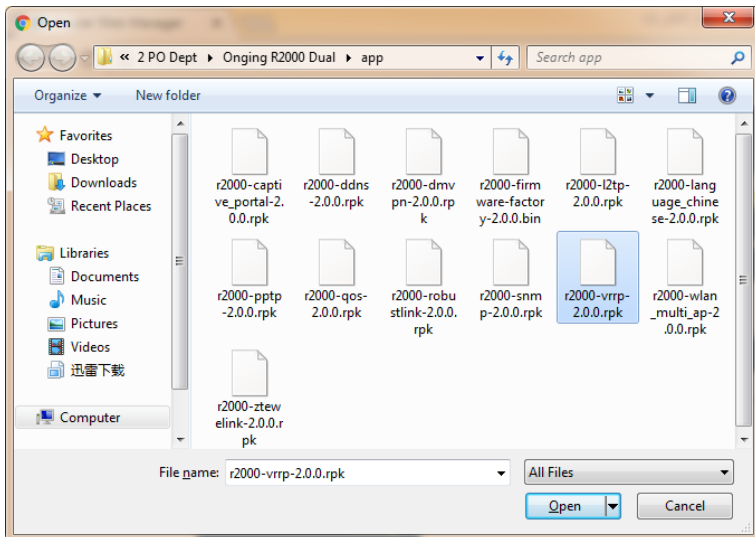
2.1 Installation

Path: **System->App**

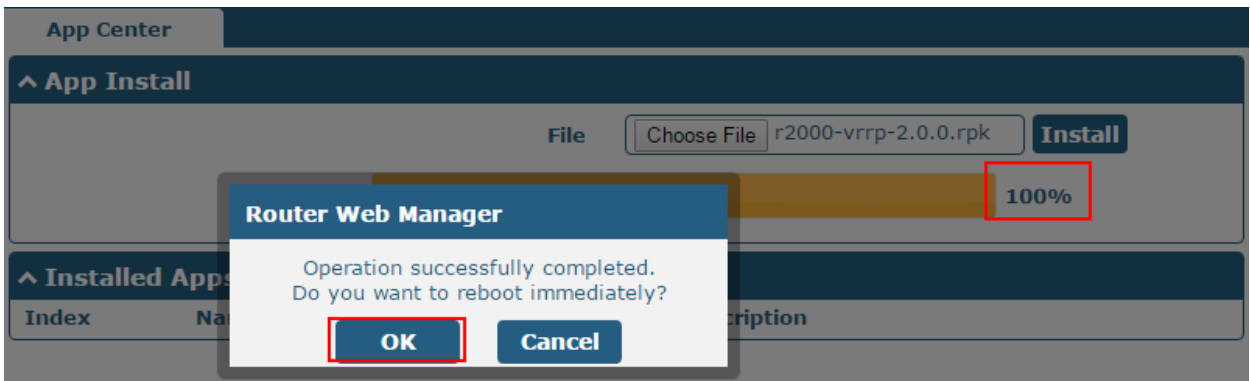
- 1 Please place VRRP App .rpk file (e.g. r2000-vrrp-2.0.0.rpk) into a free disk of PC. And then log in router configuration page; go to **System->App** as the following screenshot show.



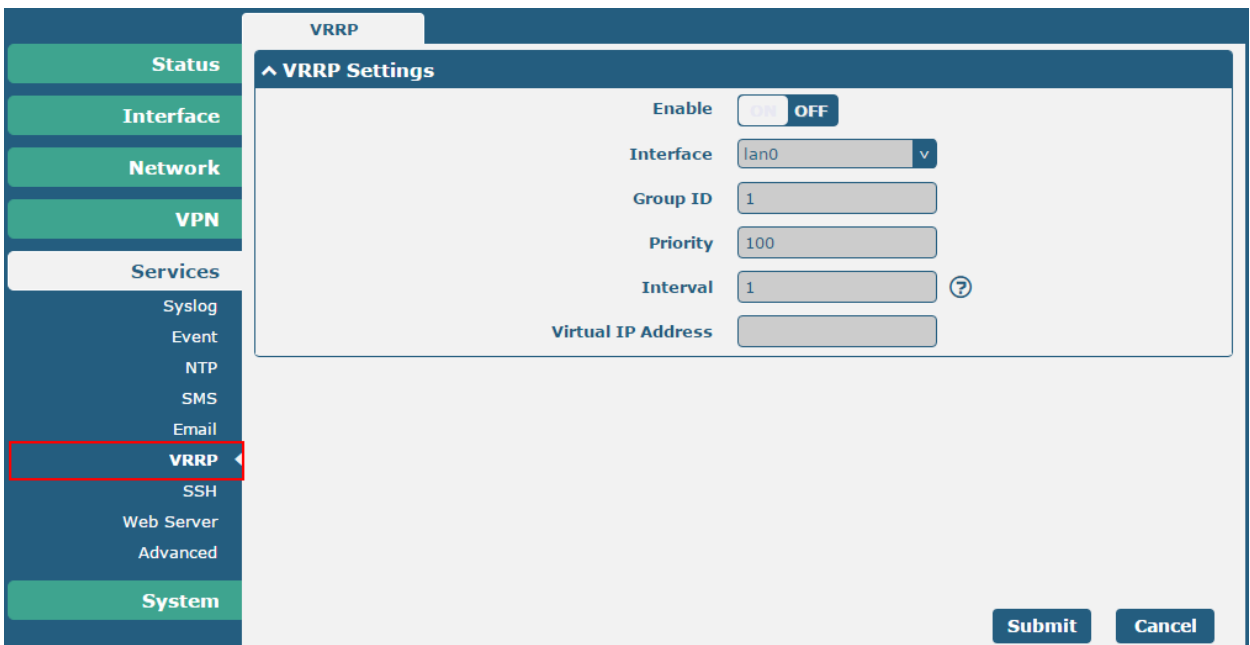
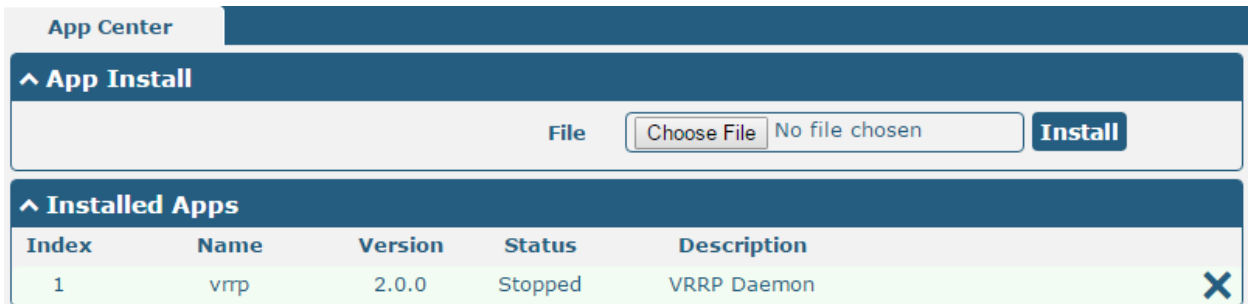
- 2 Click "Choose File" button, select VRRP App .rpk file from the PC, then click "Install" button of router configuration page.



- When the rate of installation progress reach 100%, the system will pop up a reboot router reminder window. Please click “OK” to make router reboot.



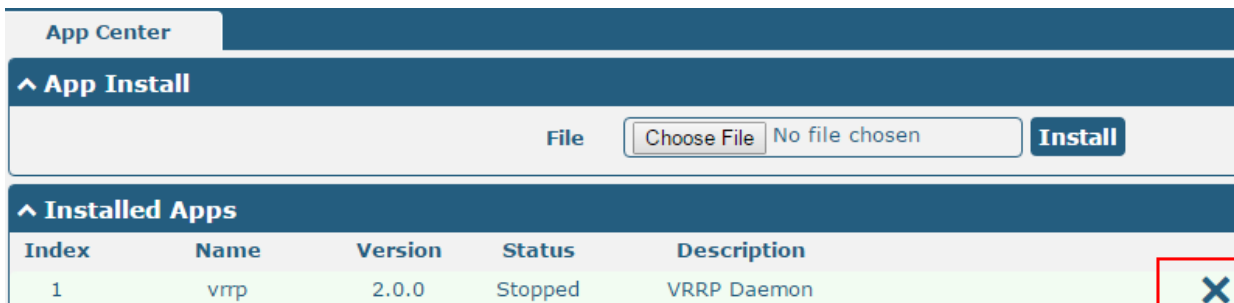
- After router power on again, log in configuration page, VRRP will be include in App Center’s “Installed Apps” list, and the function configuration will display in **Services** part.



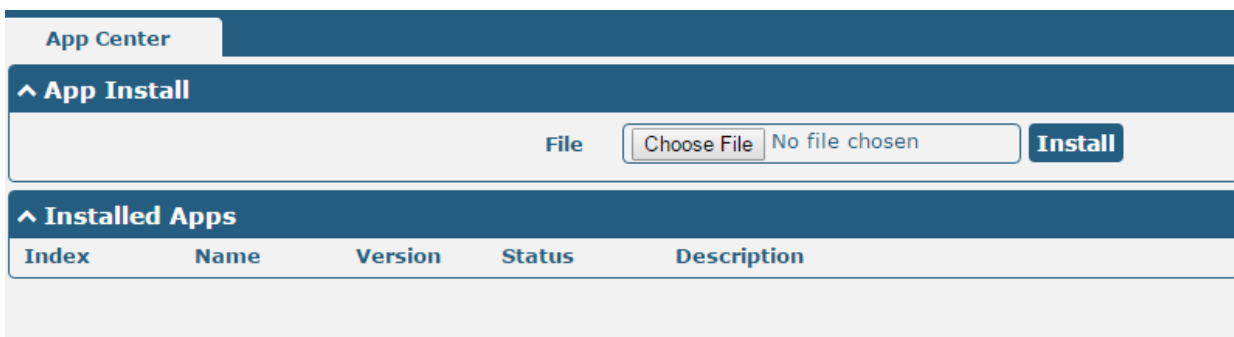
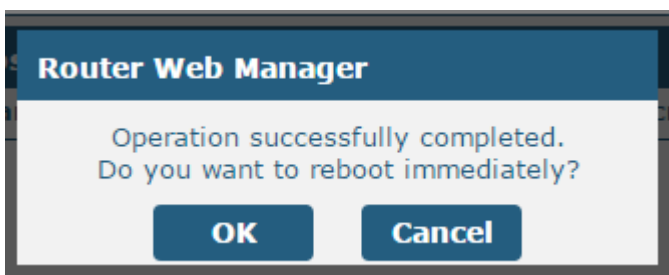
2.2 Uninstallation

Path: System->App Center

- 1 Go to “Installed Apps”, find VRRP App and then click “X”.



- 2 Click “OK” in the router reboot reminder popup window. When router finish restart, VRRP had been uninstalled.



Chapter 3 Parameters Description

VRRP
^ VRRP Settings

Enable ON OFF

Interface v

Group ID

Priority

Interval ?

Virtual IP Address

VRRP		
Item	Description	Default
Enable	Click to enable VRRP protocol.	OFF
Interface	Select from "lan0" and "lan1".	lan0
Group ID	Specify which VRRP group of this router belong to.	1
Priority	Enter the priority value from 1 to 255. The larger value has higher priority.	120
Interval	The interval that master router sends VRRP packets to backup routers.	5
Virtual IP Address	A virtual IP address is shared among the routers, with one designated as the master router and the others as backups. In case the master fails, the virtual IP address is mapped to a backup router's IP address. (This backup becomes the master router)	192.168.0.1