



App User Guide

L2TP

Version: 1.0.0

Date: 2016-06-06

Status: Confidential

Contents

Revision History	3
Chapter 1 Overview	4
Chapter 2 App Installation	4
2.1 Installation	4
2.2 Uninstallation	6
Chapter 3 Parameters Description	7

Revision History

Updates between document versions are cumulative. Therefore, the latest document version contains all updates made to previous versions.

Release Date	App Version	Doc Version	Details
2016-06-06	2.0.0	v.1.0.0	First Release

Chapter 1 Overview

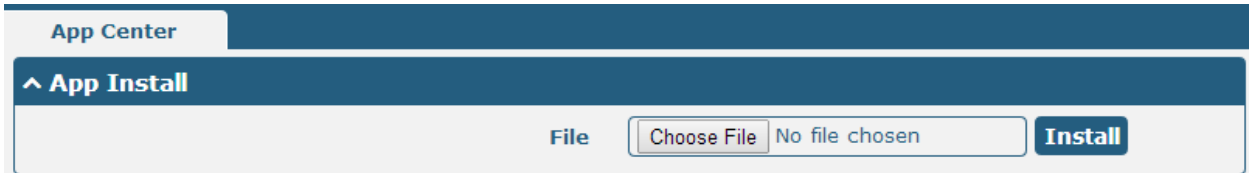
In computer networking, L2TP (Layer 2 Tunneling Protocol) is a tunneling protocol used to support virtual private networks (VPNs) or as part of the delivery of services by ISPs. It does not provide any encryption or confidentiality by itself. Rather, it relies on an encryption protocol that it passes within the tunnel to provide privacy. L2TP is an App which needs to be installed into a router in **System->App Center** unit.

Chapter 2 App Installation

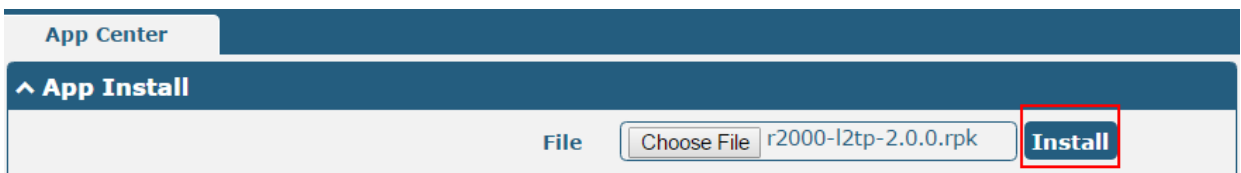
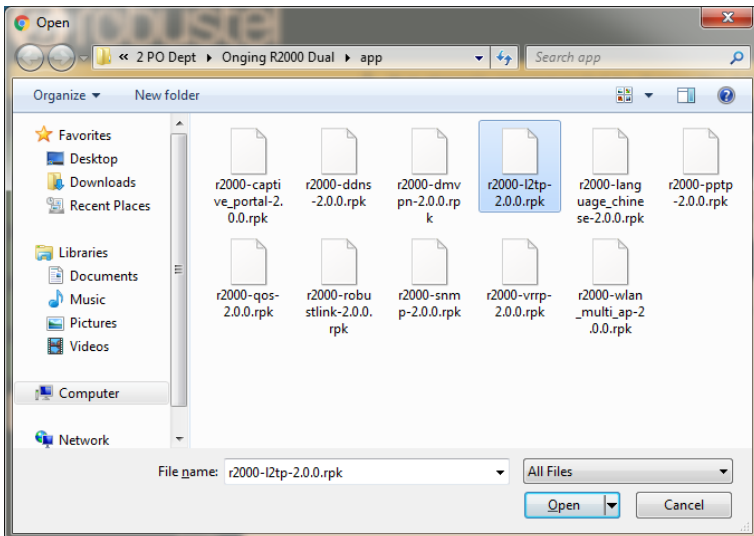
2.1 Installation

Path: **System->App**

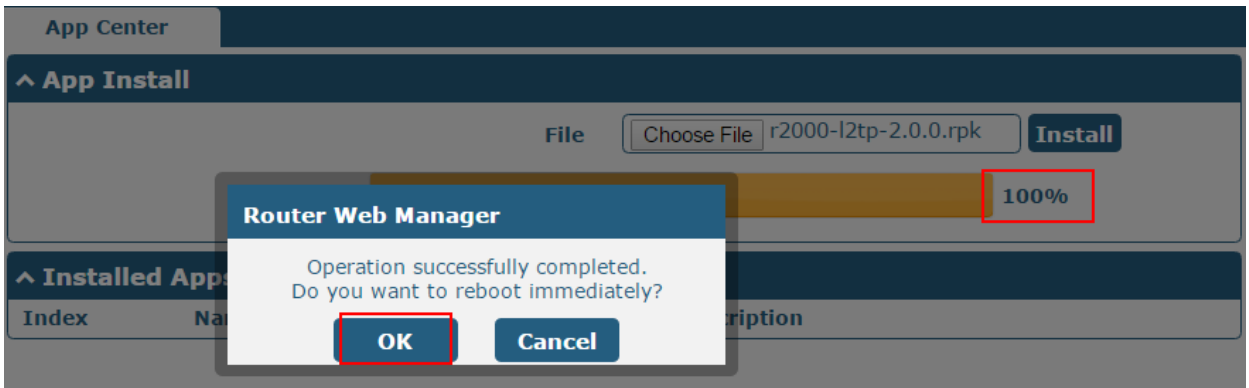
- 1 Please place L2TP App .rpk file (e.g. r2000-l2tp-2.0.0.rpk) into a free disk of PC. And then log in router configuration page, go to **System->App** as the following screenshot shows.



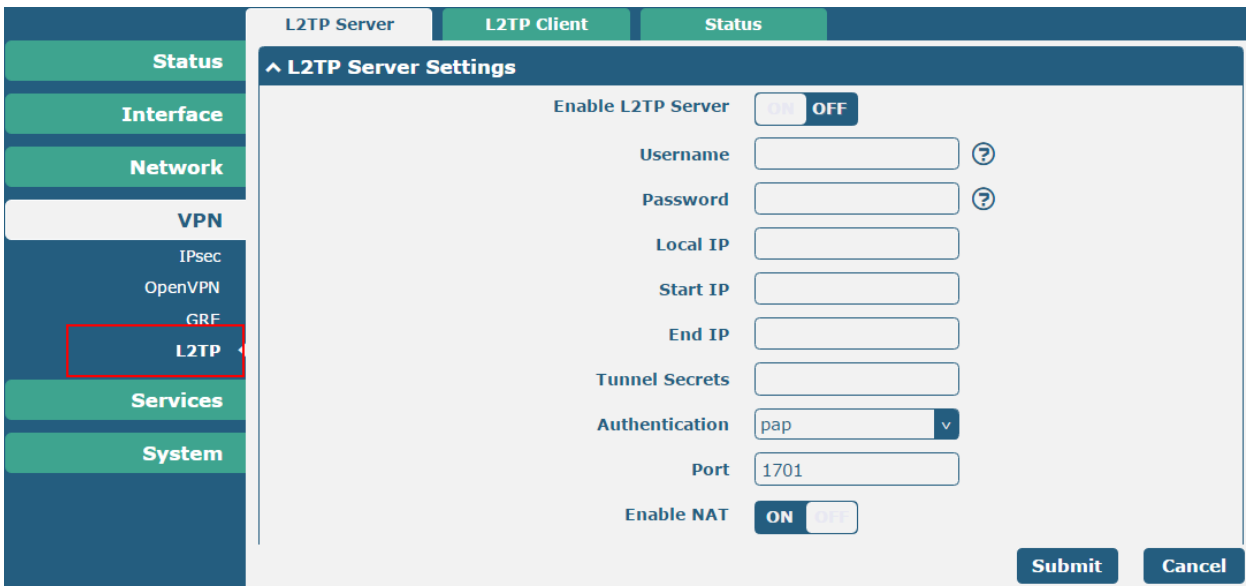
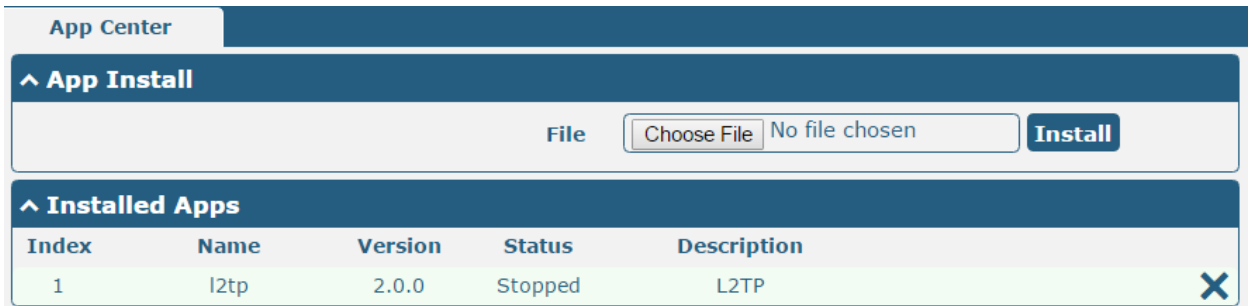
- 2 Click "Choose File" button, select L2TP App .rpk file from the PC, then click "Install" button of router configuration page.



- 3 When the rate of installation progress reach 100%, the system will pop up a reboot router reminder window. Please click “OK” to make router reboot.



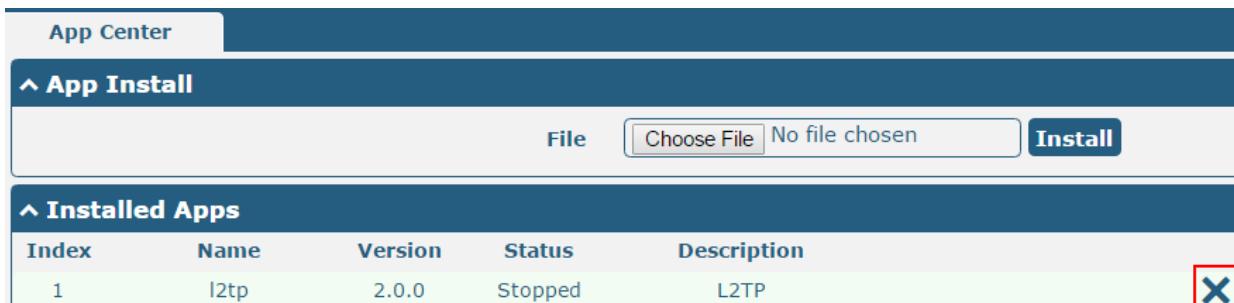
- 4 After router power on again, log in configuration page, L2TP will be include in App Center’s “Installed Apps” list, and the function configuration will display in VPN part.



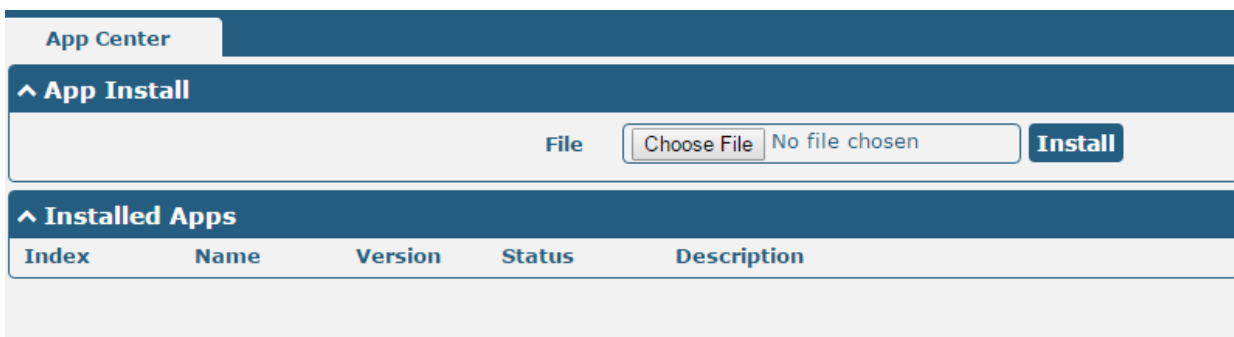
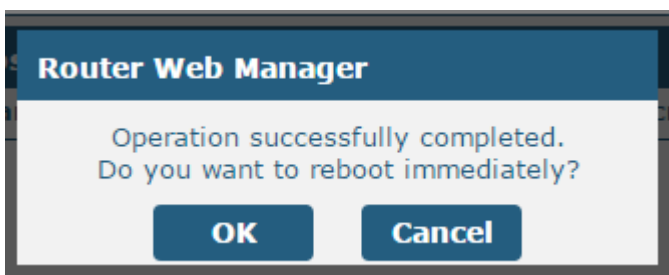
2.2 Uninstallation

Path: System->App Center

- 1 Go to “**Installed Apps**”, find L2TP App and then click “**X**”.



- 2 Click “OK” in the router reboot reminder pop up window. When router finish restart, L2TP had been uninstalled.



Chapter 3 Parameters Description

L2TP Server
L2TP Client
Status

^ L2TP Server Settings

Enable L2TP Server ON OFF

Username ?

Password ?

Local IP

Start IP

End IP

Tunnel Secrets

Authentication v

Port

Enable NAT ON OFF

Expert Options

Debug Enable ON OFF

^ Static Route

Index
Remote Subnet
Remote Subne...
Client IP
+

Submit
Cancel

L2TP Server

^ Static Route

Index

Description

Remote Subnet

Remote Subnet Mask

Client IP ?

Submit
Close

L2TP Server		
Item	Description	Default
Enable L2TP Server	Tick to enable L2TP server.	Disable
Username	Set the username which will assign to L2TP client.	Null
Password	Set the password which will assign to L2TP client.	Null
Local IP	Set the IP address of L2TP server.	10.0.0.1
Start IP	Set the IP pool start IP address which will assign to the L2TP clients.	10.0.0.2

L2TP Server		
Item	Description	Default
End IP	Set the IP pool end IP address which will assign to the L2TP clients.	10.0.0.100
Tunnel Secrets	Enter the tunnel secret which will provide to L2TP client.	Null
Authentication	Select from "PAP", "CHAP", "MS-CHAP v1" and "MS-CHAP v2". L2TP client need to select the same authentication method based on this server's authentication method.	CHAP
Port	Set the Port number of the L2TP server.	Null
Enable NAT	Click to enable NAT feature of L2TP. The remote L2TP client's source IP will be disguised before accessing router L2TP server	OFF
Expert Options	You can enter some other PPP initialization strings in this field. Each string can be separated by a space.	noccp nobsdcomp
Remote Subnet @ Static Route	Enter the remote peer's private IP address or remote subnet's gateways address.	Null
Remote Subnet Mask @ Static Route	Enter the remote peer's subnet mask.	Null
Client IP @Static Route	Specifying the L2TP client IP address. Empty means anywhere.	Null

L2TP Server
L2TP Client
Status

^ L2TP Client Settings

Index	Enable	Description	Server Address	Authenticat...
1	<input checked="" type="checkbox"/>			

+

Click "+" symbol to add a L2TP client. The max tunnel accounts are 3.

L2TP Client

^ L2TP Client Settings

Index

Enable ON OFF

Description

Server Address

Username ?

Password ?

Authentication v

Tunnel Secrets

Port

Enable NAT ON OFF

All Traffic via This Interface ON OFF

Remote Subnet

Remote Subnet Mask

Expert Options

L2TP Client		
Item	Description	Default
Server Address	Enter your L2TP server’s public IP or domain name.	Null
Username	Enter the username which was provided by your L2TP server.	Null
Password	Enter the password which was provided by your L2TP server.	Null
Authentication	Select from “Auto”, “PAP”, “CHAP”, “MS-CHAP v1” and “MS-CHAP v2”. You need to select the corresponding authentication method based on the server’s authentication method. When you select “Auto”, router will auto select the correct method based on server.	Disable
Tunnel Secrets	Enter L2TP tunnel secret in this item.	Null
Port	Set the Port number of the L2TP client.	Null
Enable NAT	Click to enable NAT feature of L2TP. The source IP address of host Behind R3000 will be disguised before accessing the remote L2TP server.	Disable
All traffic via this interface	After click to enable this feature, all data traffic will be sent via L2TP tunnel.	Disable
Remote Subnet	Enter L2TP remote Protected subnet’s address.	Null
Remote Subnet Mask	Enter L2TPremote Protected subnet’s mask.	Null
Expert Options	You can enter some other PPP initialization strings in this field. Each string can be separated by a space.	noccp nobsdcomp

Go to Status to check the L2TP connection status.

L2TP Server	L2TP Client	Status						
^ L2TP Server Status <table border="1"> <thead> <tr> <th>Index</th> <th>Remote IP Address</th> <th>Uptime</th> </tr> </thead> <tbody> </tbody> </table>			Index	Remote IP Address	Uptime			
Index	Remote IP Address	Uptime						
^ L2TP Client Status <table border="1"> <thead> <tr> <th>Index</th> <th>Description</th> <th>Status</th> <th>Local IP Address</th> <th>Remote IP Address</th> <th>Uptime</th> </tr> </thead> <tbody> </tbody> </table>			Index	Description	Status	Local IP Address	Remote IP Address	Uptime
Index	Description	Status	Local IP Address	Remote IP Address	Uptime			